

COLLEGE OF EDUCATION, CHOPDA

MATRICES 7.1.3

- **Documentary evidence in support of each selected response**
- **Geo-tagged photographs**
- **Income Expenditure statement highlighting the specific components**

CHOPDA EDUCATION SOCIETY'S COLLEGE OF EDUCATION, CHOPDA

Waste Management Practices of the Institution

Chopda Education Society's College of Education facilitates several techniques for the management of degradable and non-degradable waste. The primary focus is to reduce, reuse and recycle the waste. The college has "Waste Management Cell" that deal with the minimization of waste. The waste management practices of the college include

1. Segregation of Waste
2. E-waste Management
3. Vermi-compost

1. Segregation of Waste

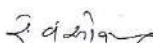
The college implemented solid waste management by enforcing the waste segregation rules. Segregation of waste is done keeping wet and dry wastes separately, so that dry waste can be recycled and wet waste can be composted. Dustbins are placed in every classroom, administrative rooms, library, laboratory, rest room and in needed places. Separate dustbins for biodegradable and non- biodegradable wastes are placed in the campus. Therefore, waste is segregated into biodegradable such as paper waste, food wastes, plant waste and non- biodegradable namely glass, metals, batteries, plastics, spare parts of electronic things. The non- degradable items are disposed for recycling. The solid wastes like plant litter, leaf litter and waste papers are collected and disposed to a place where it can be converted into manure and used as fertilizer for plants and trees. Every day the waste is collected and disposed properly.

This ensures that solid waste segregated at the source. Every day the waste is collected in bins and disposed to a place where it can be converted into manure. It is also ensured that the solid waste management has been done in following ways.

Paper Waste

Used paper from the faculties and office is collected, stored, and recycled properly. The unwritten/ unprinted pages of used papers are reused to send circulars and other documentation purpose. Dustbins are provided in every classroom for collecting paper waste and they are cleared every day.




Principal
College of Education
Chopda Dist. Jalgaon

Food Waste

All hostels and canteen are provided with waste disposal mechanisms. The food waste is used for biogas production. The biogas produced is utilized for cooking at the hostel. The waste from the food outlets on campus is removed by the service providers and disposed of.



Collection of Wastage



R. D. D. D.
Principal
College of Education
Chopda Dist. Jalgaon

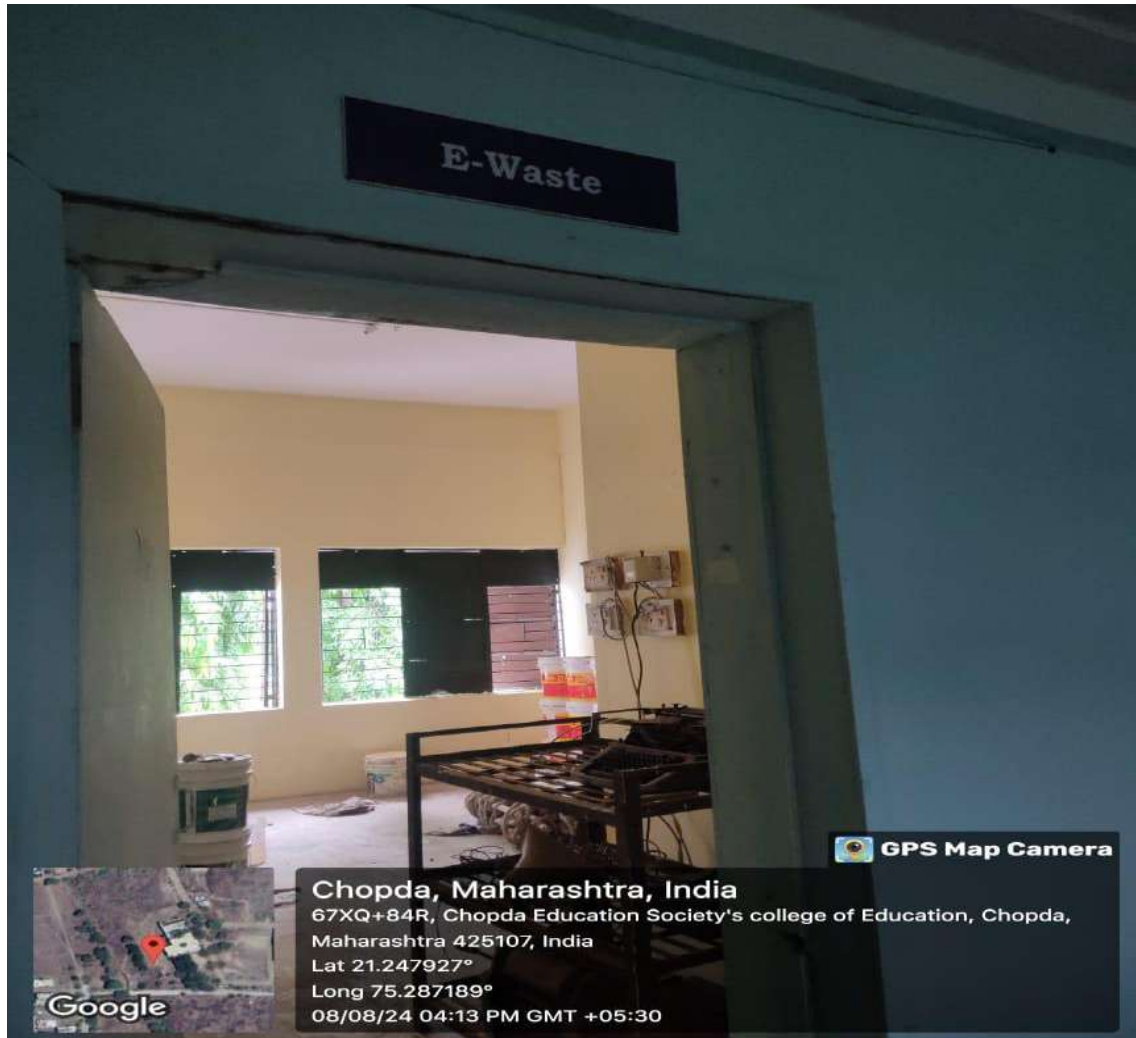
Bio-compost



R. D. Dhanraj
Principal
College of Education
Chopda Dist. Jalgaon

2. E-waste Management

The e-waste generated on campus, largely comprising defunct hardware from computers and other related electronic gadgets/ devices is annually collected and disposed. Tube lights, CFL, LED and computer parts are stored in the scrap yard of the college and handed over to the maintenance department in the College campus.



R. D. Singh
Principal
College of Education
Chopda Dist. Jalgaon

3. Vermi-compost

Chopda Education Society's has vermi-compost units to transform organic waste into a nutrient-rich fertilizer. The main objective of Vermicomposting is to produce organic manure of exceptional quality for the organically starved soil by using waste. The daily organic waste is generated due to fallen leaves from the green cover of the campus is used for vermicomposting. The disposal mechanism involves the proper collection, segregation, and disposal of waste. The biodegradable wastes are disposed of in the compost yard, composted, and recycled. Waste is collected and heaped in the farmyard and this waste is composted and converted into manure. Over 500 kgs of leaf wastes are collected at Vidyalaya Campus every day to make it Organic Manure. It is used for fertilizing the plants on the campus.

Vermi-compost



S. S. S.
Principal
College of Education
Chopda Dist. Jalgaon

CHOPDA EDUCATION SOCIETY'S
COLLEGE OF EDUCATION, CHOPDA

Varmi Compost





Segregation of Waste

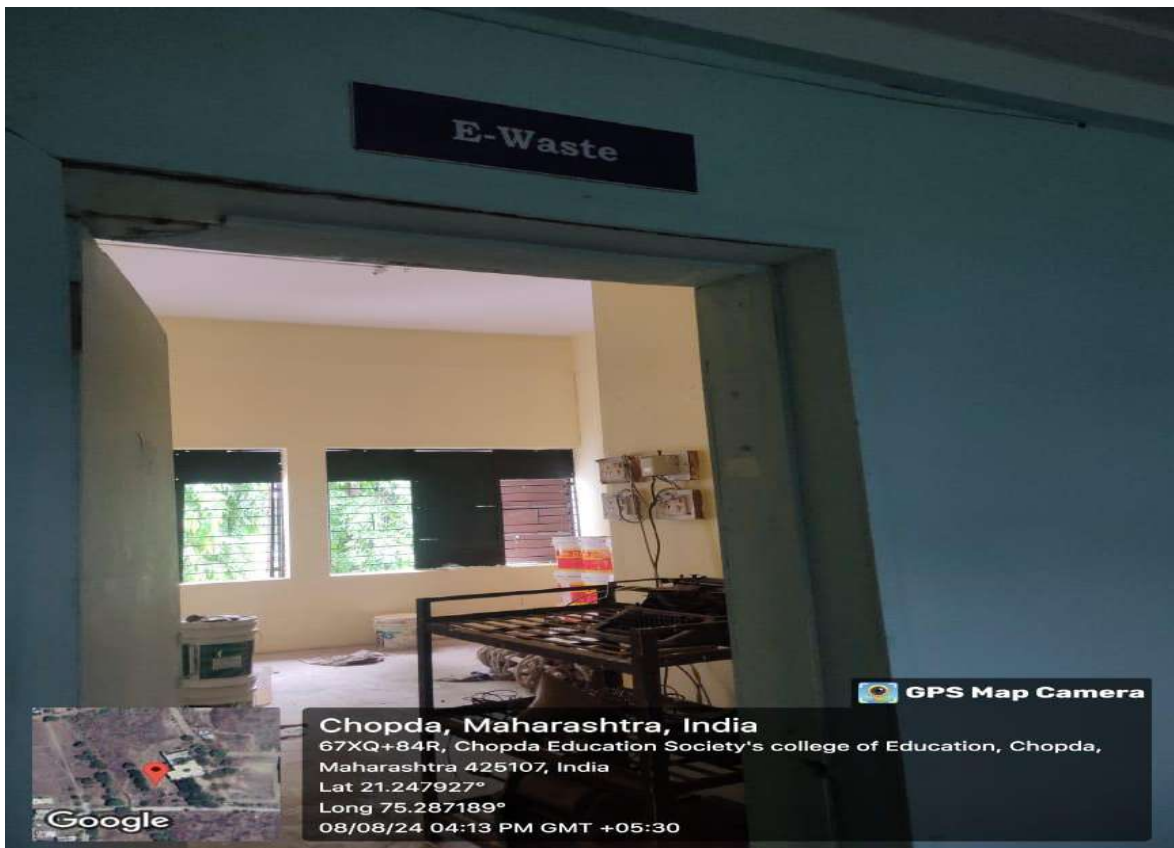


Compost Unit





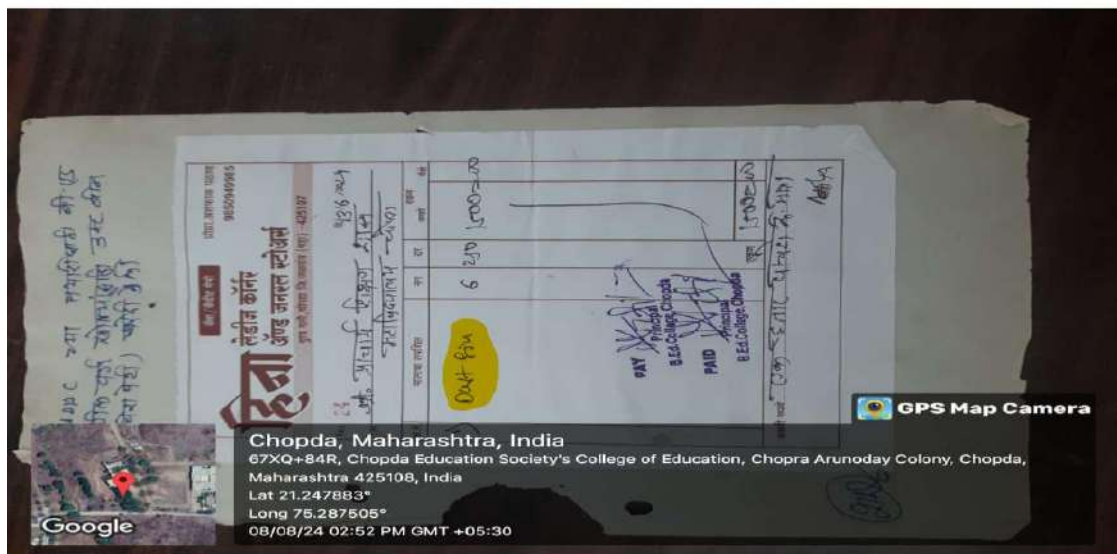
E-Waste Room





Principals
Principal
College of Education
Chopda Dist. Jalgaon

Income Expenditure Statement



[Handwritten Signature]
Principal
 College of Education
 Chopda Dist. Jalgaon

(सहनी ऑफिस, चोपडा)

चोपडा एज्युकेशन सोसायटी, चोपडा संचालित-

शिक्षण शास्त्र महाविद्यालय, चोपडा
खातावणी

117

खात्याचे नांव

रिपेअर खाते

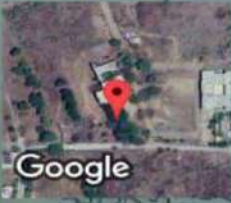
तारीख	किर्द पान नंबर	व्हाउचर नंबर	तपशील	जमा रक्कम रूपये	पैसे	नावे रक्कम रूपये	पैसे
8/1/18	0E		पेन्टर मजूरी (रंगशाही)			95000=00	
2/1/18	22		मिस्त्री (सागरी)		कंपोस्ट अड्ड्या तगार करणे	4000=00	
9/8/18	6E		सुमार मिस्त्री 2000 फायन मिस्त्री 2000			8000=00	
9/8/18	60		रंगाचे साहीस			2E60E=00	
30/3/18	60		सिमेंट कसाहीस			9E30=00	
						5483E=00	



Chopda Education Society
Chopda Dist. Jalgaon

सेमिनार वक्री शोप खाते

GPS Map Camera



Chopda, Maharashtra, India

67XQ+84R, Chopda Education Society's College of Education, Chopra Arunoday

Colony, Chopda, Maharashtra 425108, India

Lat 21.247883°

Long 75.287505°

08/08/24 02:49 PM GMT +05:30



Principal
College of Education
Chopda Dist. Jalgaon